

*Parents /carers needed for study about collaboration when planning and delivering support in school for children with language disorders  
Can you help?*

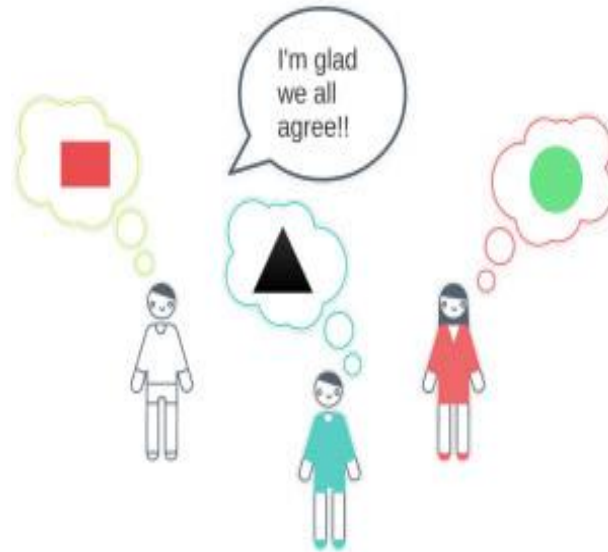
*What is the research about?*

Collaboration is difficult to achieve when it involves people with different knowledge and experience.

We are developing a framework to support collaboration across SLTs, teachers, parents/carers and children with language disorders (LD) when planning and delivering support in school.

*Who are we looking for ?*

We are seeking the views of parents/carers who have experience of collaborative planning in school for their child with LD.



*What's involved?*

Completing a short online survey. You will be asked your opinion on a series of statements about collaboration. The survey will take about 40 minutes to complete. Some of the statements **may be sent out again** if people don't all agree on them first time.

*Who can I contact to find out more?*

Contact name: Aoife Gallagher  
Address: School of Allied Health, UL.  
Email: [aoife.gallagher@ul.ie](mailto:aoife.gallagher@ul.ie)  
Tel: 089 2205549

**The University of Limerick Ethics Committee has approved this study.  
Ref: 16\_12\_15\_EHS**